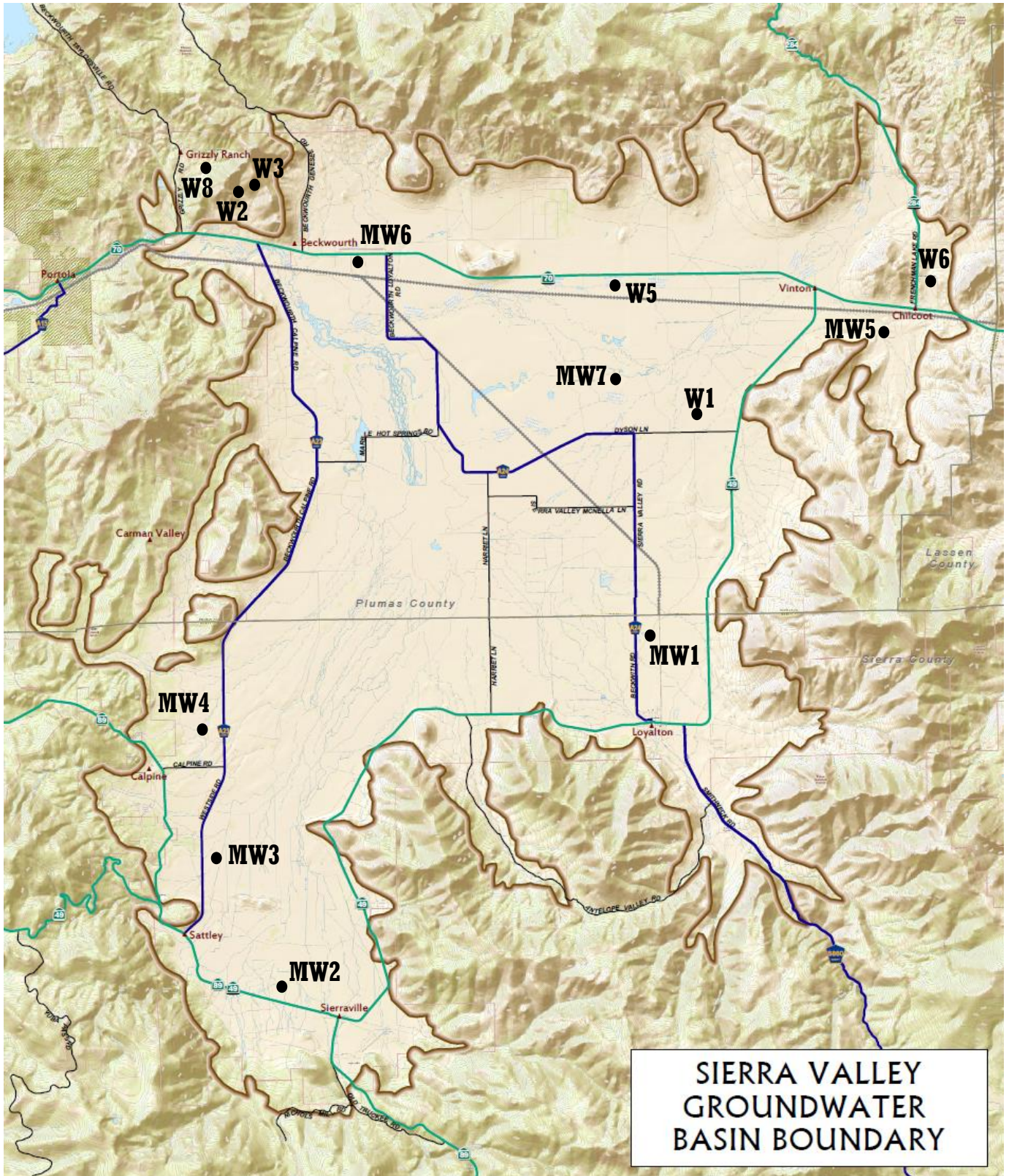


SVGMD Monitoring Well Locations

May 2020



- MW1 Loyalton (Dotta)
- MW2 Sierraville (Sanford)
- MW3 Sattley (Dobbas)
- MW4 Calpine (Bradley)
- MW5 Chilcoot (Potter)

- MW6 Feather River Land Trust
- MW7 Dyson Lane (Roberti)
- W1 Dyson Lane (D&S)
- W2 Beckwourth (Murray)
- W3 Beckwourth (Williams)

- W5 Highway 70 (D&S)
- W6 Chilcoot (Black)
- W8 Grizzly Ranch Gold Club