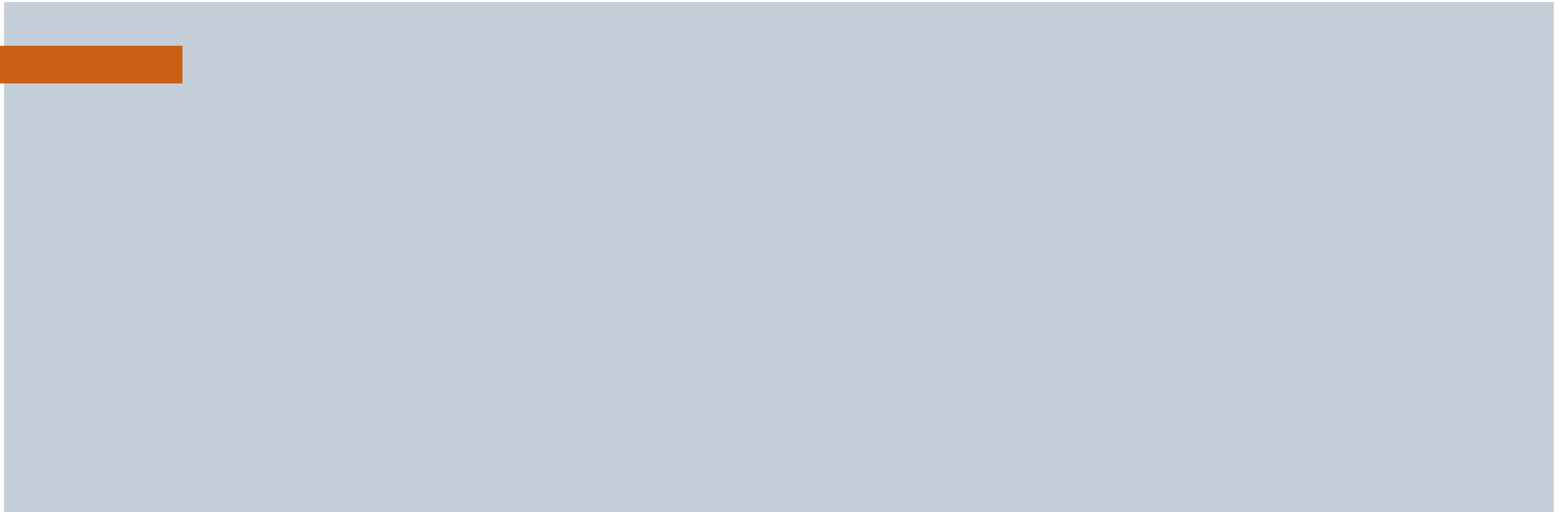
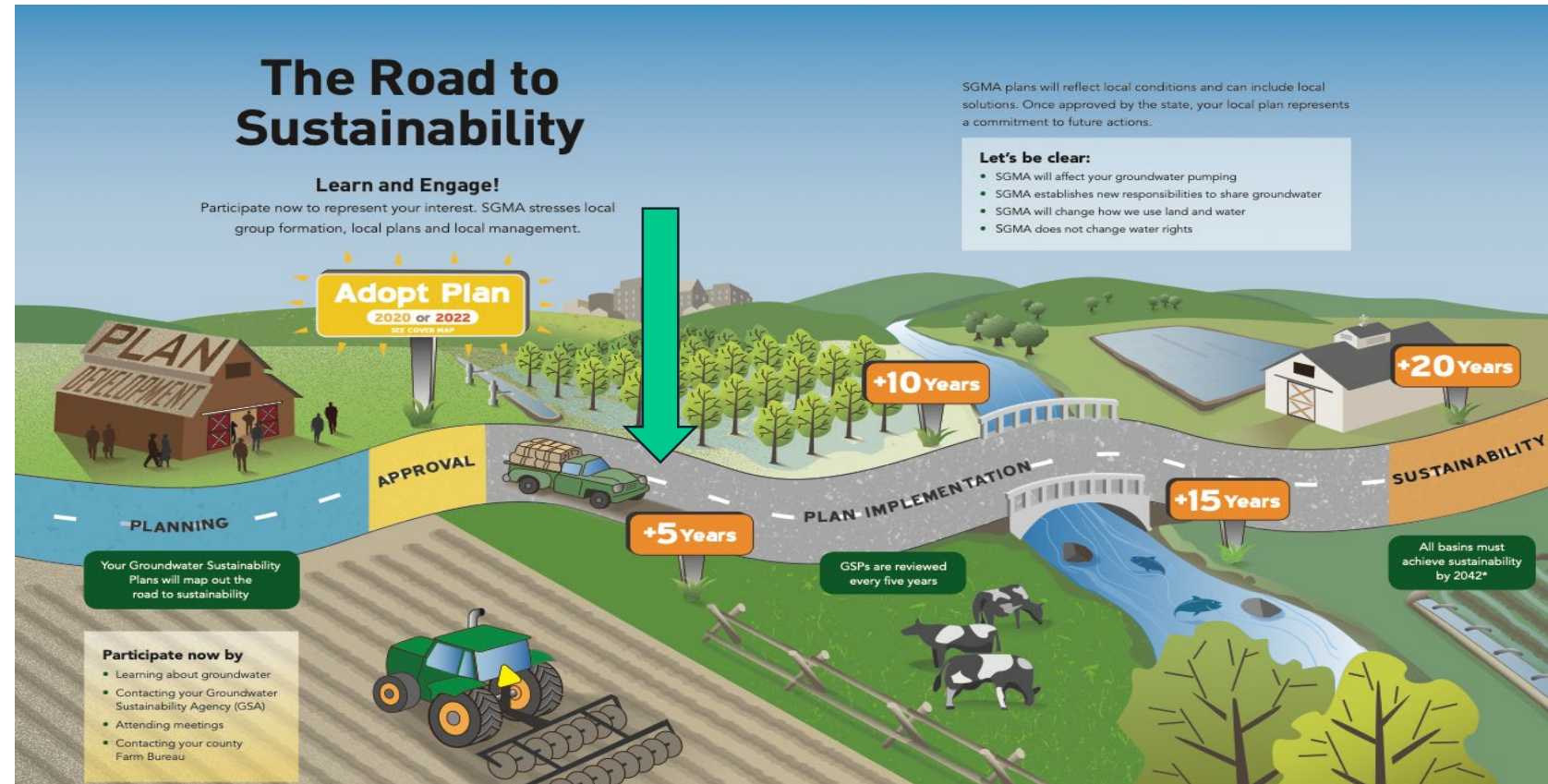


Sierra Valley Groundwater Sustainability Plan – Where We've Been



Sustainable Groundwater Management Act Background

- SGMA signed into law in 2014 focuses on protecting California's groundwater resources
- Sierra Valley is a medium priority basin and was required to submit its Groundwater Sustainability Plan (GSP) in January 2022
- SGMA requires that the Sierra Valley basin demonstrate sustainability by 2042, and continued sustainability through 2072, the 50-year planning and implementation horizon



GSP Contents

- Introduction
- Plan Area (Description of Basin Conditions)
- Sustainable Management Criteria
- Projects and Management Actions
- Plan Implementation

Sierra Valley Sustainability Goal from GSP:

To manage groundwater resources in a manner that best supports the long-term health of the people, the environment, and the economy of Sierra Valley into the future by avoiding significant and unreasonable impacts to environmental, domestic, agricultural, and industrial beneficial uses and users of groundwater

Sierra Valley GSP submitted in January 2022 and approved in July 2023

DWR GSP Recommended Corrective Actions

1. Investigating the basin fill and bedrock units and identifying the appropriate principal aquifer(s)
2. Providing more information about how data from the adjacent Chilcoot Subbasin will be utilized
3. Amending definition of groundwater level undesirable result
4. Amending definition of subsidence undesirable results for land subsidence
5. Rationale for why 2021 water quality results were used instead of 2015
6. Collect additional data and coordinate with stakeholders to better understand impacts of ISW depletion
7. Update monitoring network

Grant funding allows us to address these recommended actions

Grant Funding Allows Us to Address the Recommended Actions

Current Grants

- DWR SGMA Implementation Round 2 – available through 3/31/2026
- Plumas Watershed Forum – available through 12/2026
- CDFW Drought, Climate and Nature-based Solutions – available through 3/2027

Future Grant Funding

- DWR
- CDFW
- Looking at other opportunities

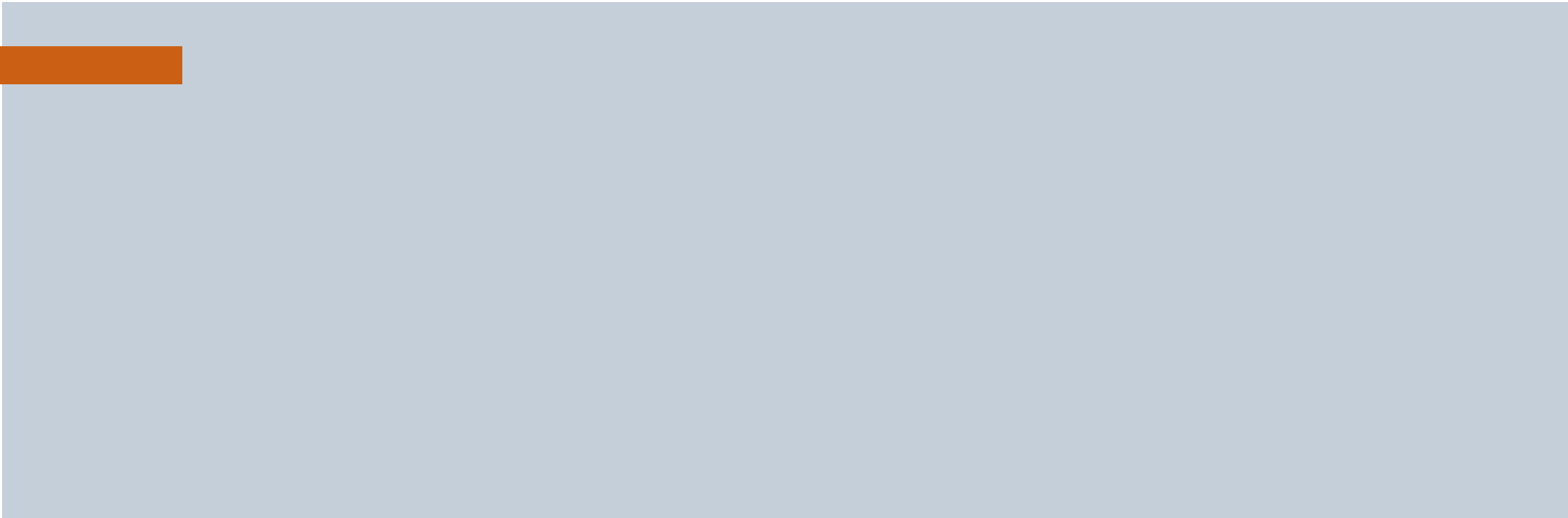
Public comments on GSP

Comments received from CDFW, Feather River Land Trust, Trout Unlimited, CNSP, Org ID3,13 individuals

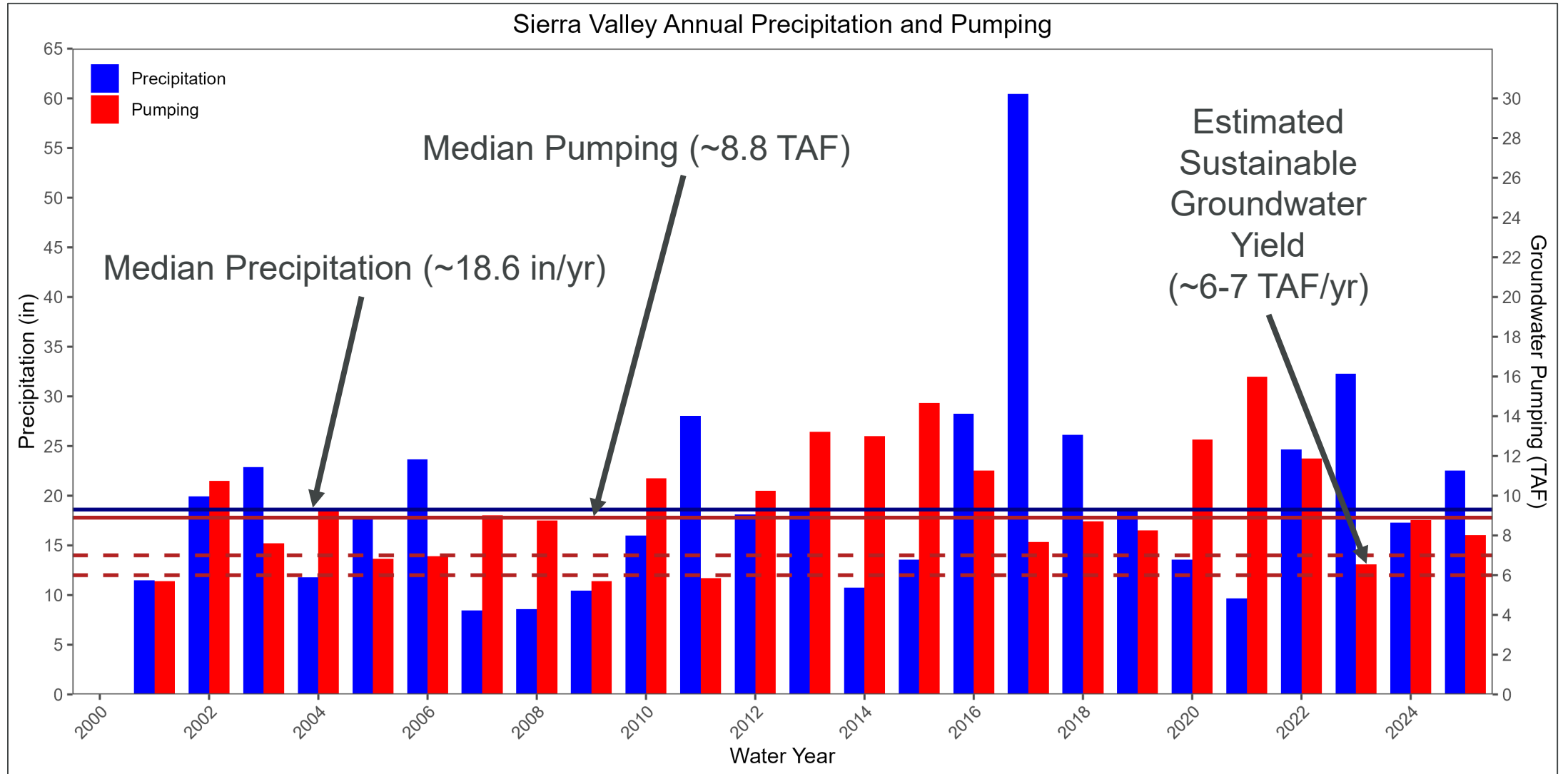
Primary Comment Themes	How we've addressed it so far
Stakeholder outreach inadequate for domestic well users, tribes, DAC, environmental concerns; lack of public participation	Continue to hold monthly public board meetings General outreach at Sierra Plumas County Fair in 2025
Climate change not considered in water budget	GSP included scenarios Model has been updated to include climate scenarios
GSP focuses on ag not domestic water users	Well inventory focused on further characterizations of domestic wells
Characterization and consideration of ISW/GDEs inadequate	Shallow monitoring wells installed near wetlands Further characterization of GDEs and wildlife species



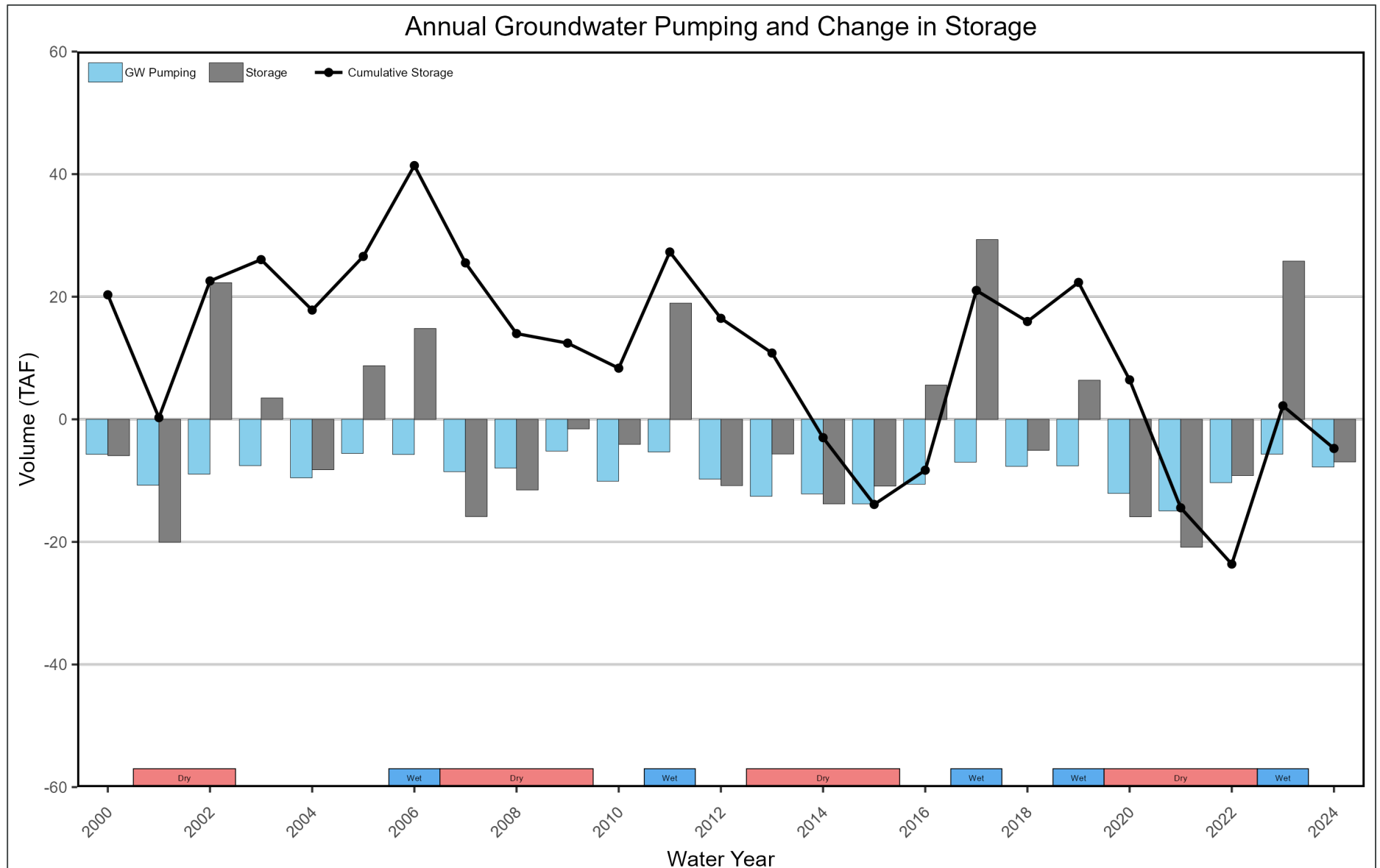
Groundwater Use & Conditions



Sierra Valley Precipitation and Pumping



Groundwater Use and Conditions



*Compared to Jan 1, 2015