



**Sierra Valley
Groundwater
Management District**

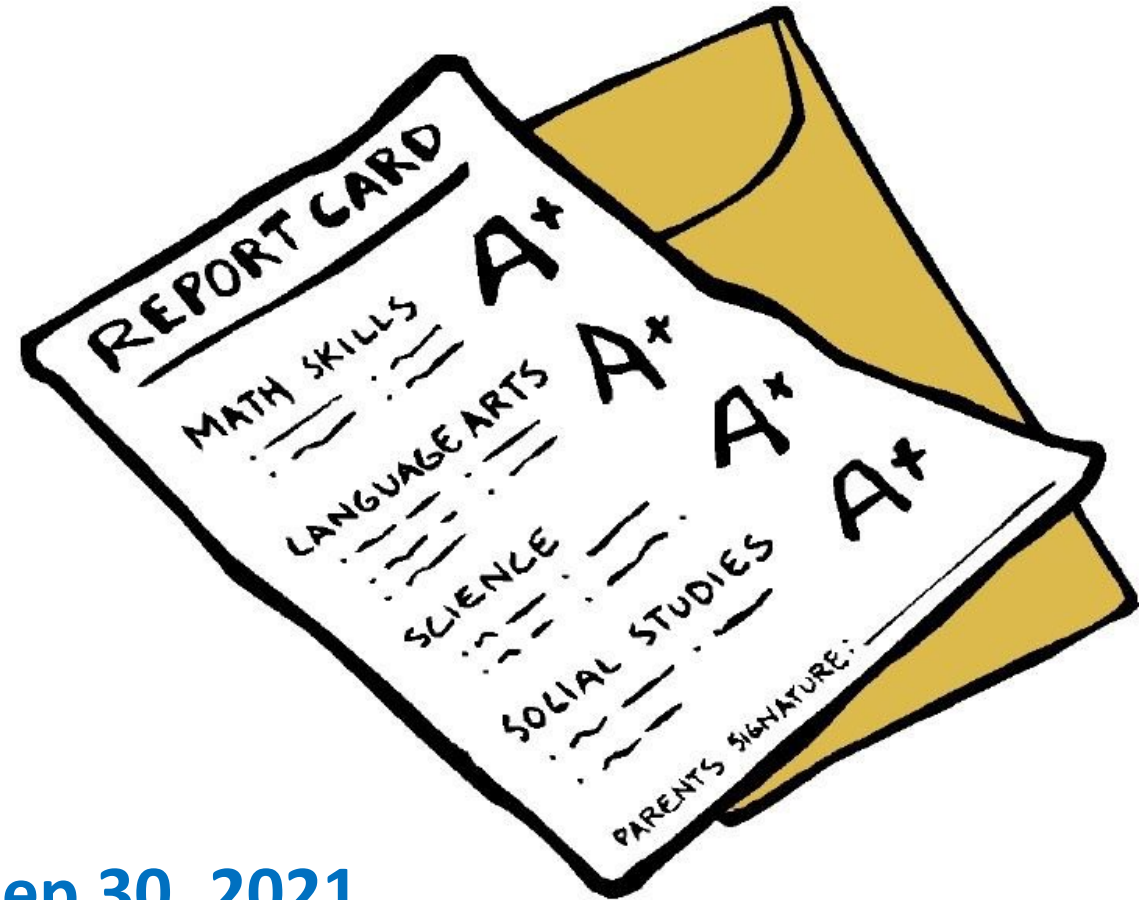
Board of Directors Meeting

February 21, 2022



GSP Annual Reports (23 CCR § 356.2)

- Due to DWR April 1 every year
- Summarizes hydrologic conditions and storage changes over the preceding water year
- Describes progress towards plan implementation



Annual Report WY 2021: Oct 1, 2020 - Sep 30, 2021

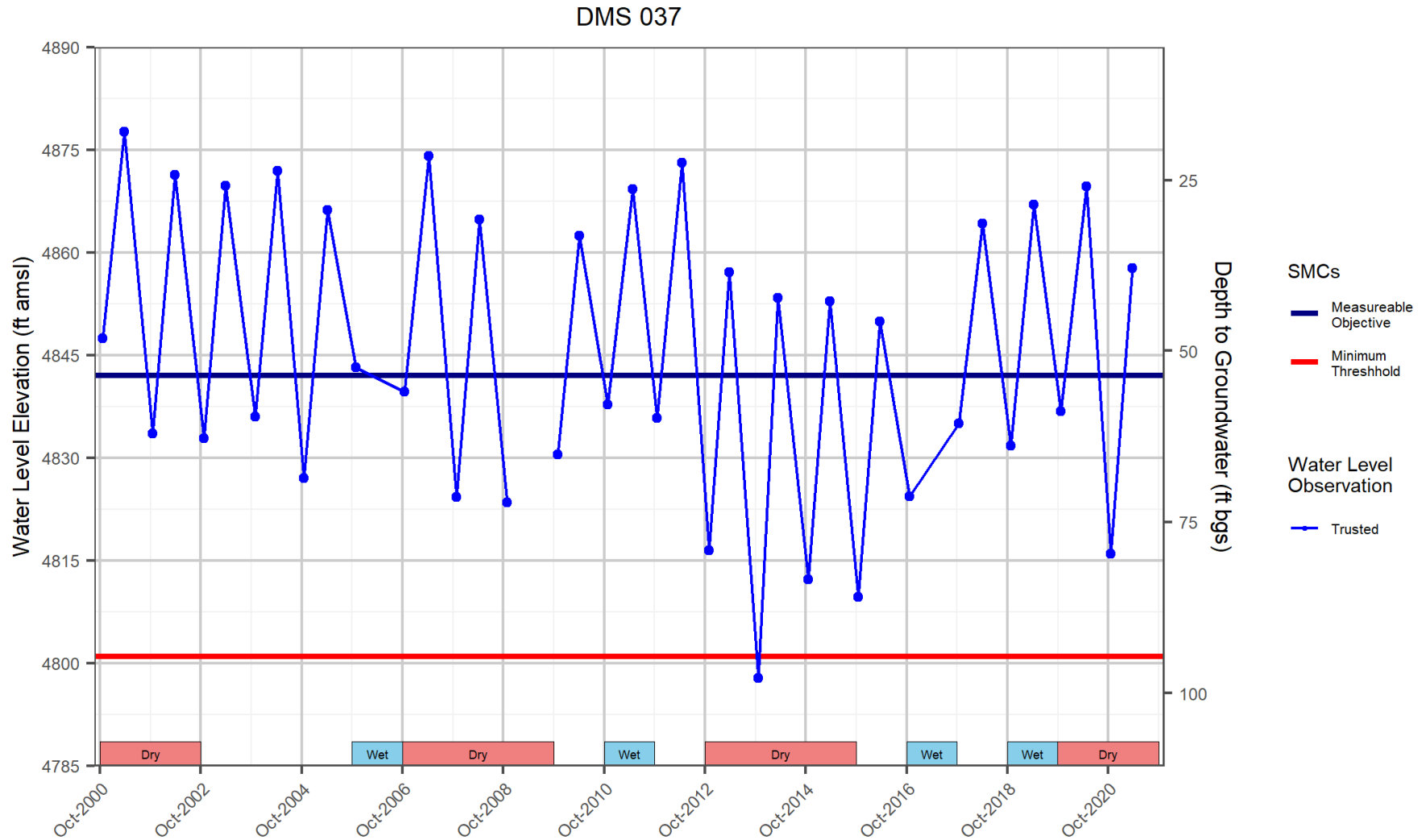
GSP Annual Report Requirements

1. General information and executive summary (+ location map)
2. Maps
 - Spring/Fall groundwater elevation contour maps
 - Hydrographs of representative monitoring points (example)
 - Map of groundwater extractions (aggregated by PLSS section)
 - Map of changes in groundwater storage
 - Cumulative basin storage plot
3. Tables
 - Summary table of RMPs with MOs, and MTs (Table 3.3.1-1 in GSP)
 - Groundwater pumping by water use sector (ag, muni, etc.)
 - Surface water used or available for recharge or in-lieu use
 - Total water use by sector (ag, muni, etc.)
4. Description of progress towards implementing the plan

~9-14 Figures

~4 Tables

Example RMP Hydrograph



GSP Annual Report Data Sources

Groundwater Levels

DWR

SVGMD

Groundwater Extractions

SVGMD

Sierra Brooks

City of Loyalton¹

Calpine²

Surface Water Supplies

Watermaster

Change in Storage

Estimated from water level observations or groundwater model

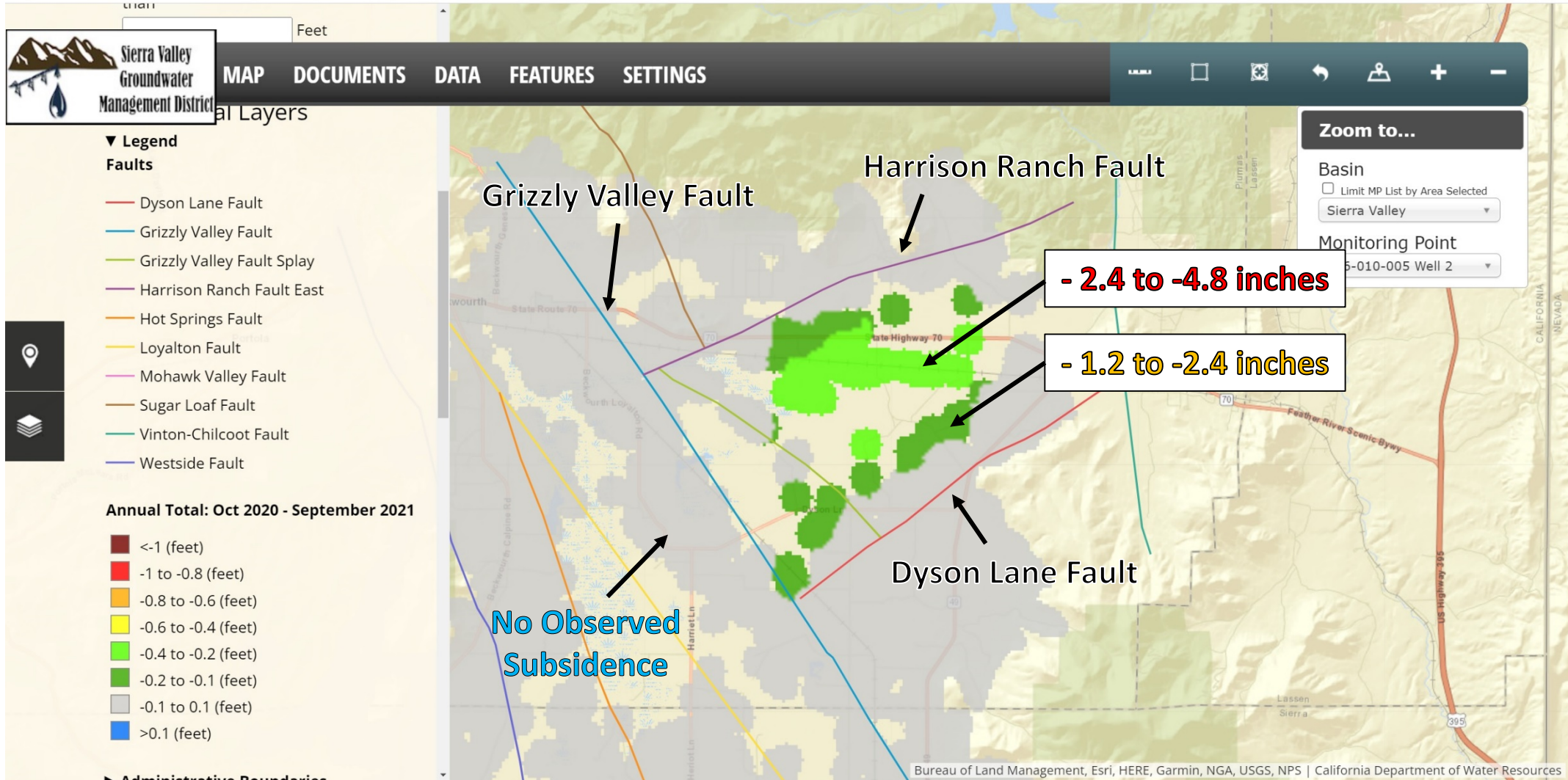
Red = Requested Submitted

Green = Data Received

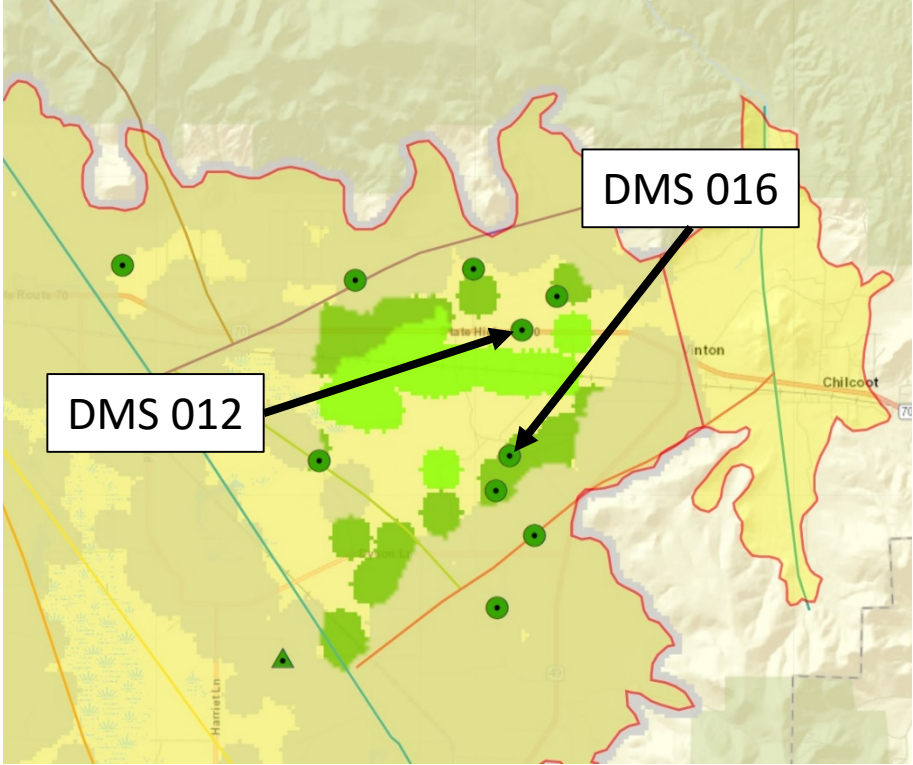
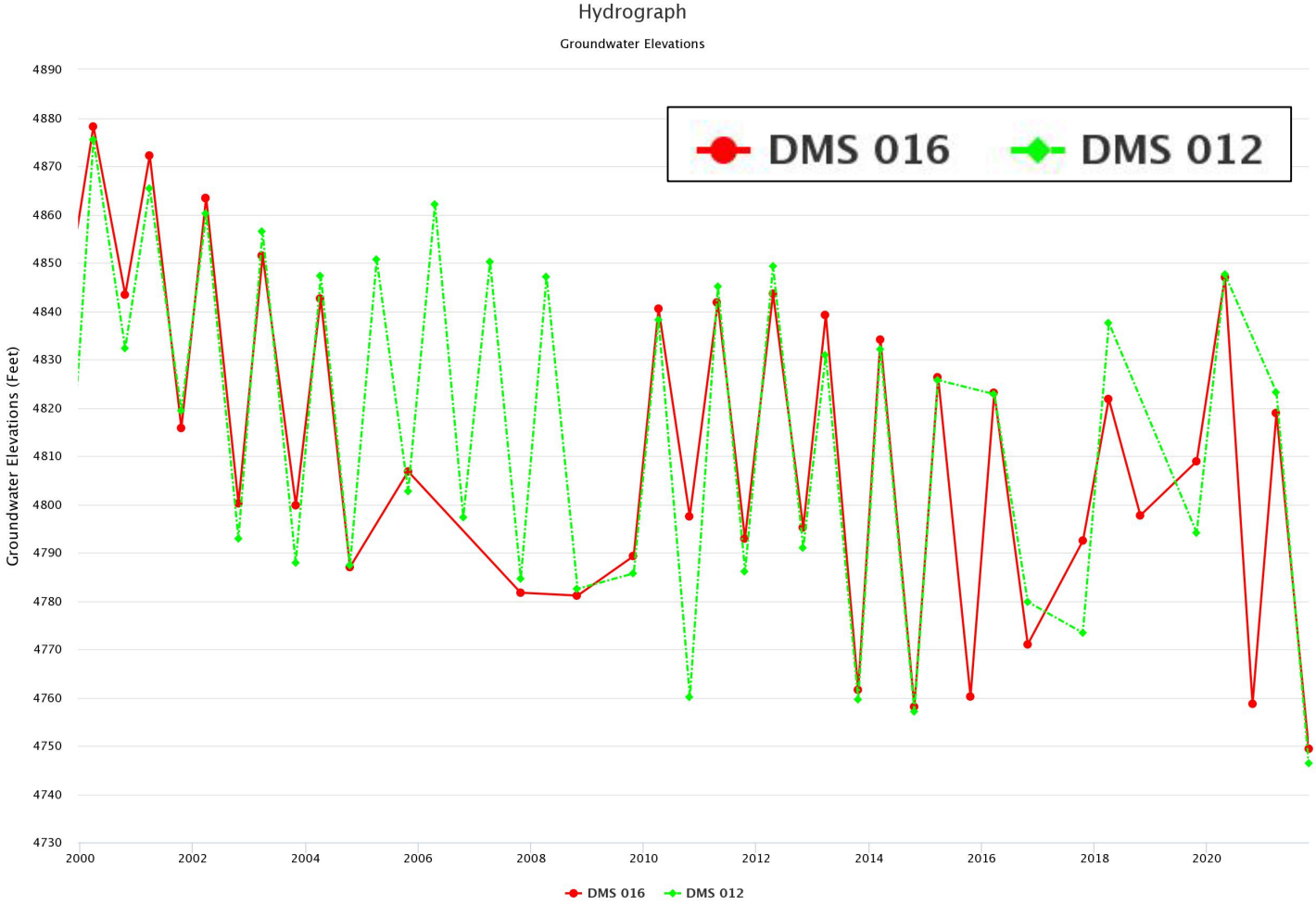
1. Missing Oct-Dec 2020 extractions

2. Technically not required as wells are located outside of basin boundary

Annual Subsidence - WY2021



Annual Subsidence - WY2021





**Sierra Valley
Groundwater
Management District**

