



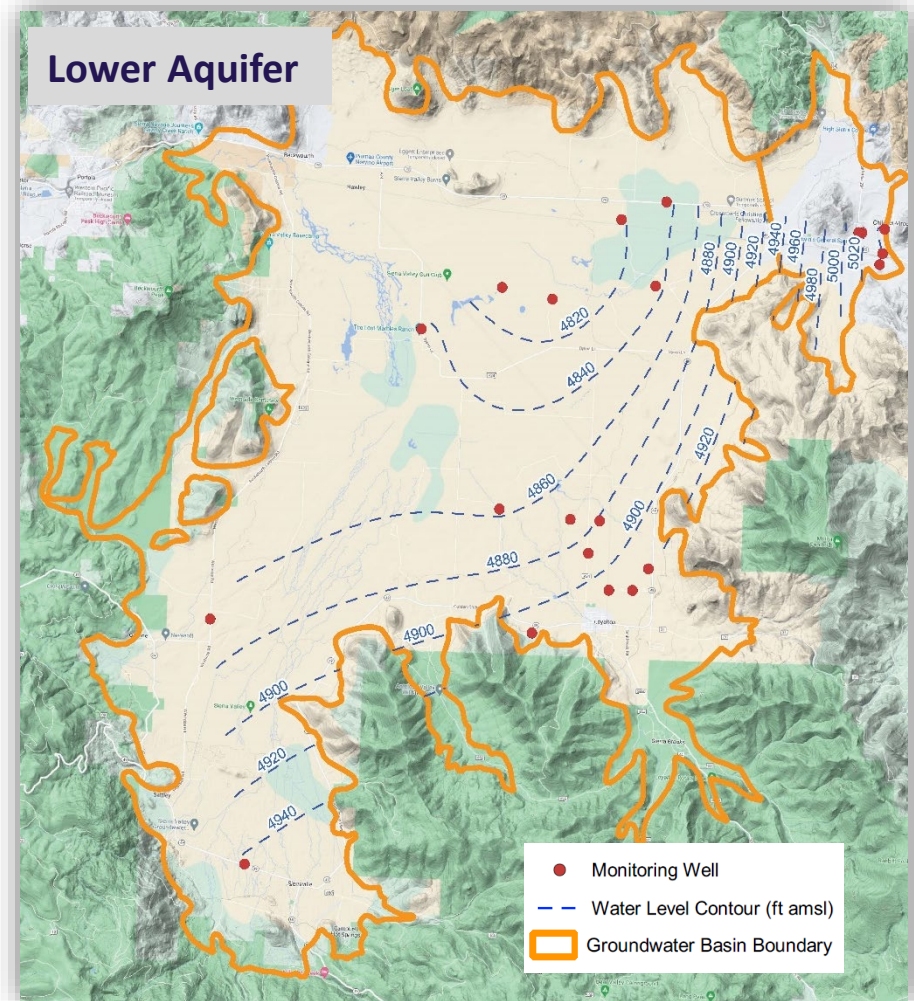
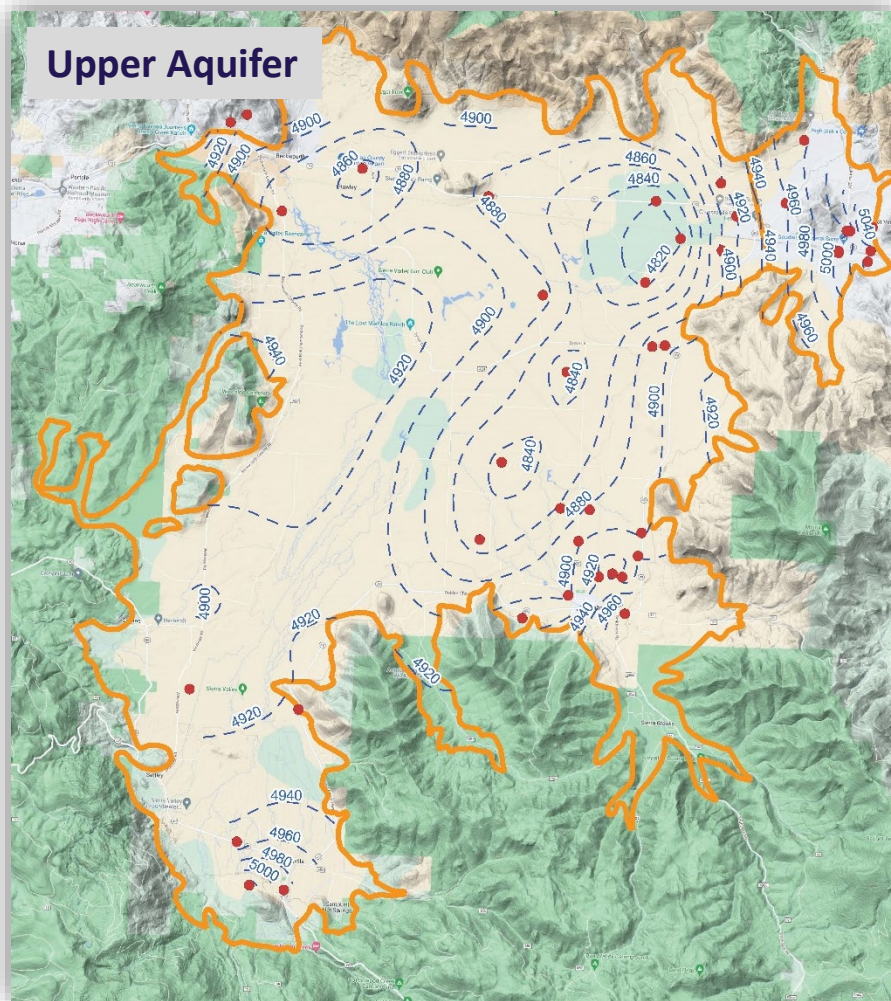
Board of Directors Meeting Sierra Valley Groundwater Management District Annual Report

February 20th, 2022

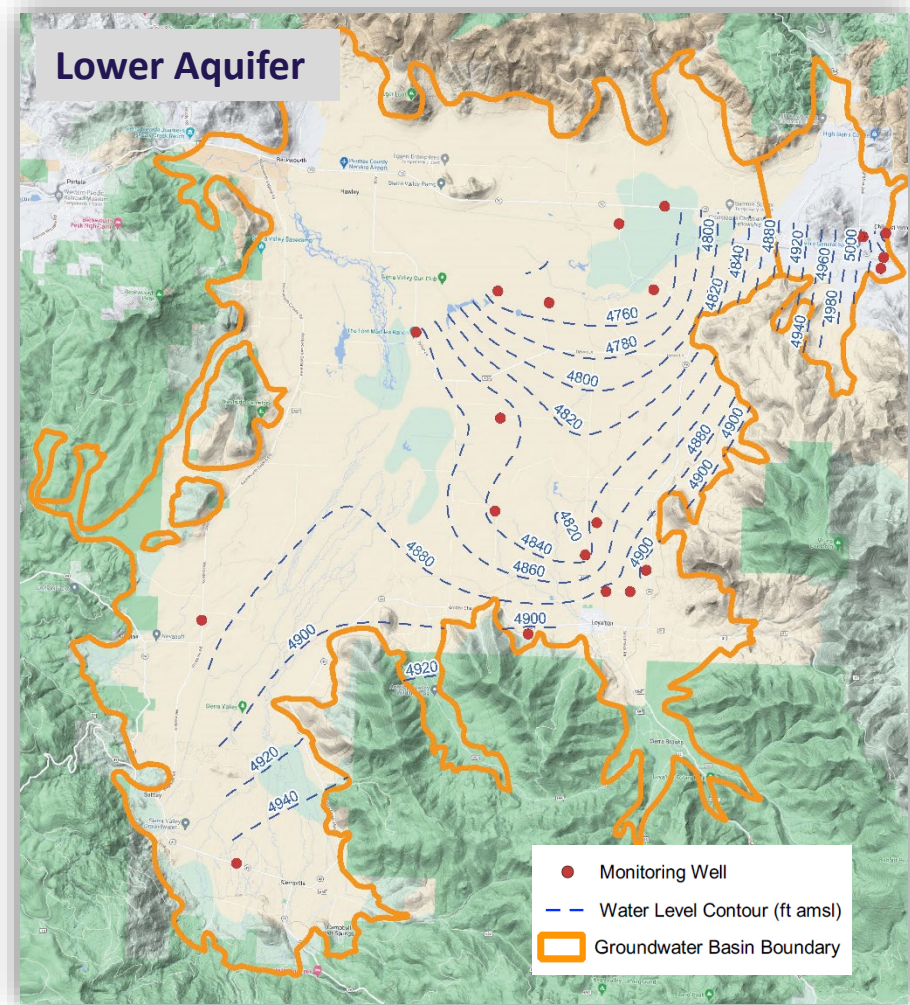
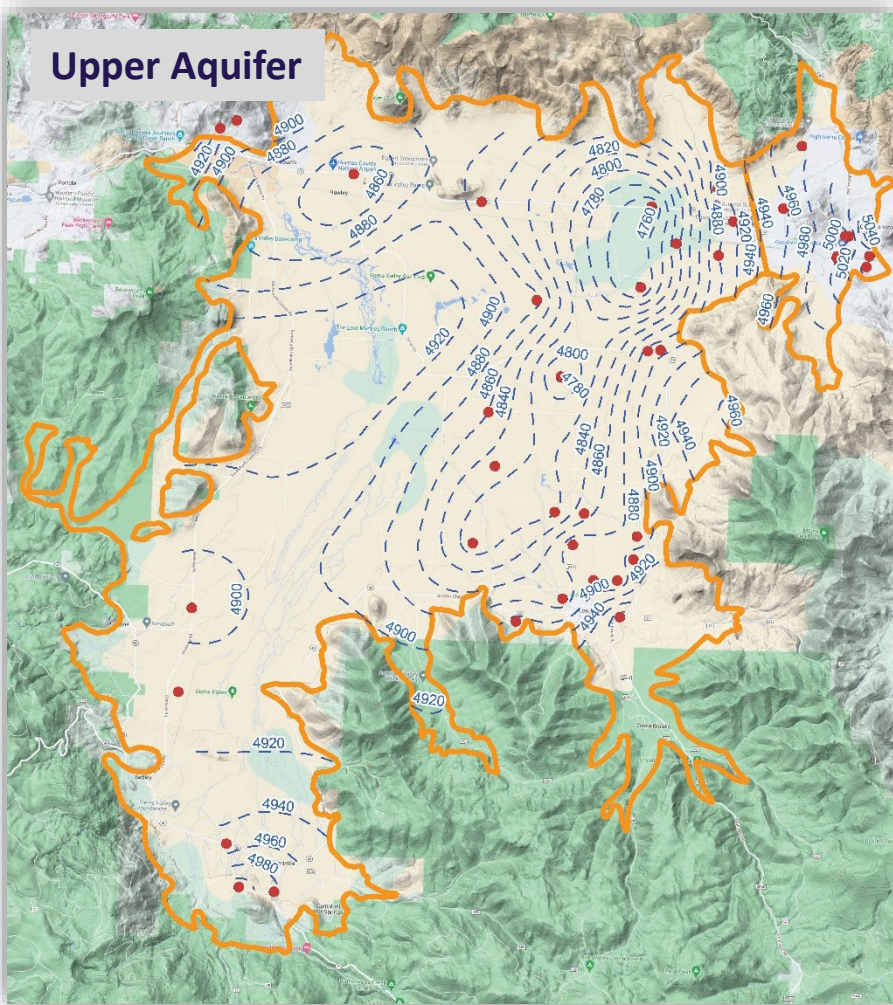
GSP Annual Report

- Due to DWR by/on April 1st
 - Basin conditions and water use for Water Year 2022 (October 1st 2021 - September 30th, 2022)
- Provide summary of reports to aid with Director and stakeholder review
- Solicit comments from Directors and stakeholders by March board meeting

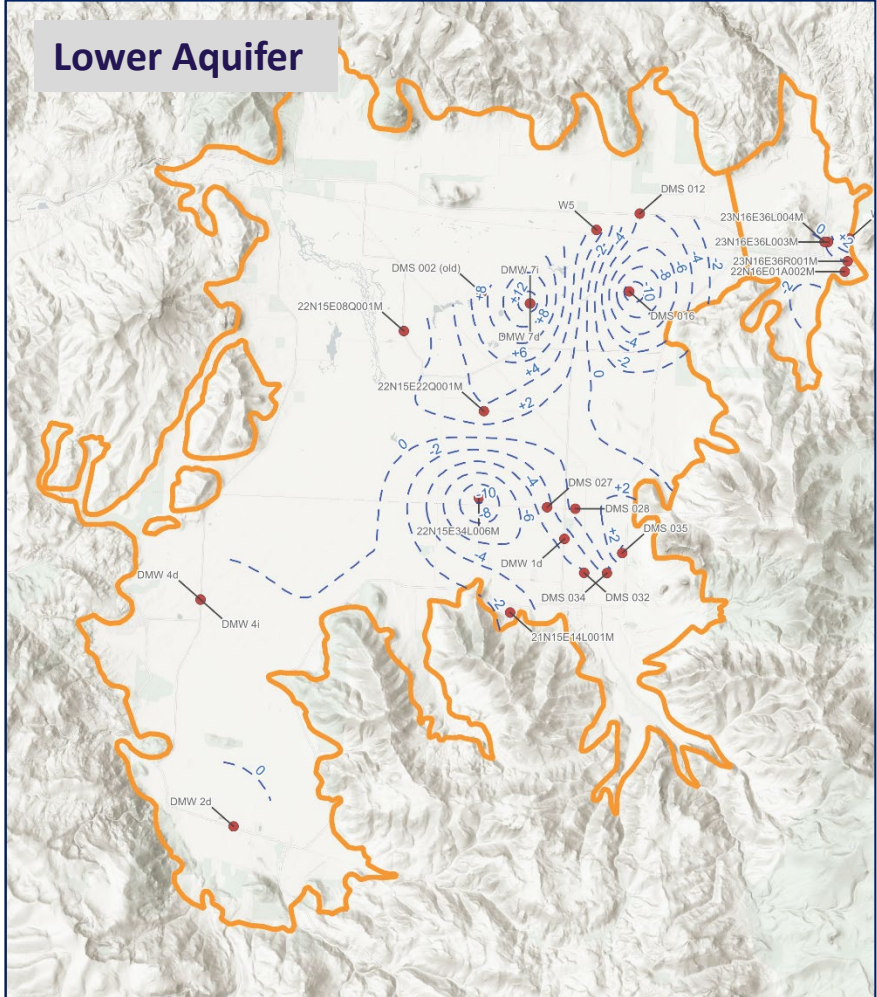
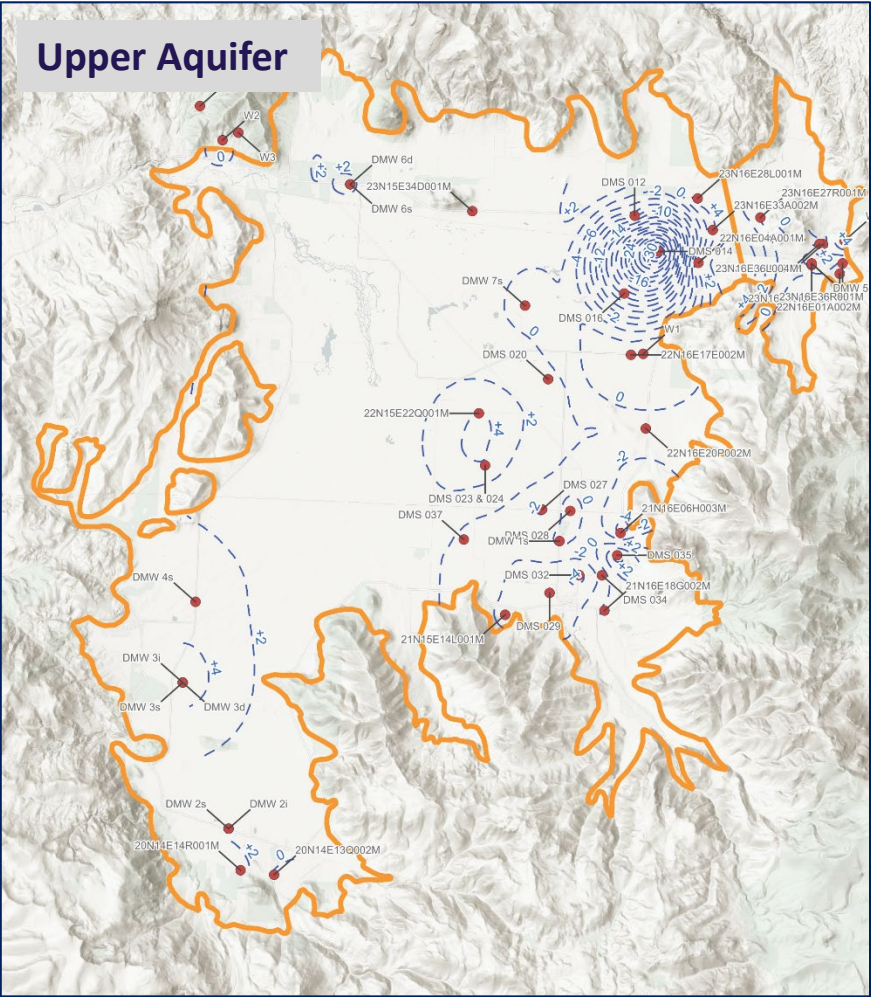
Spring Water Level Contours



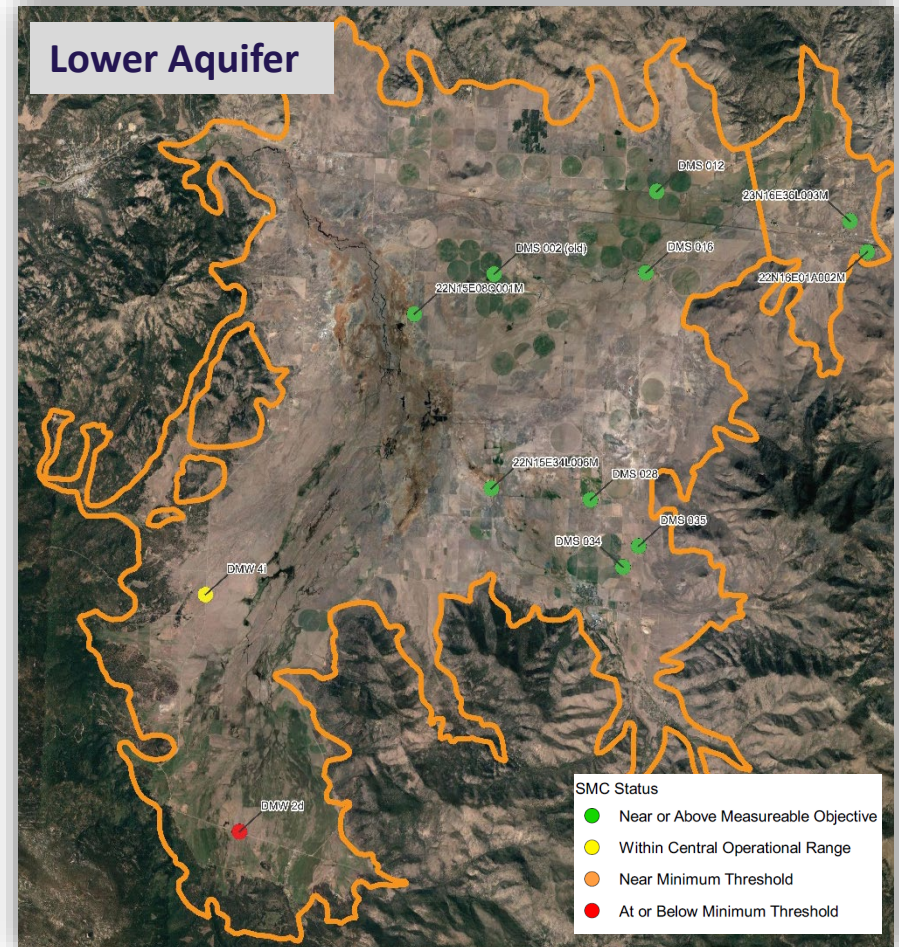
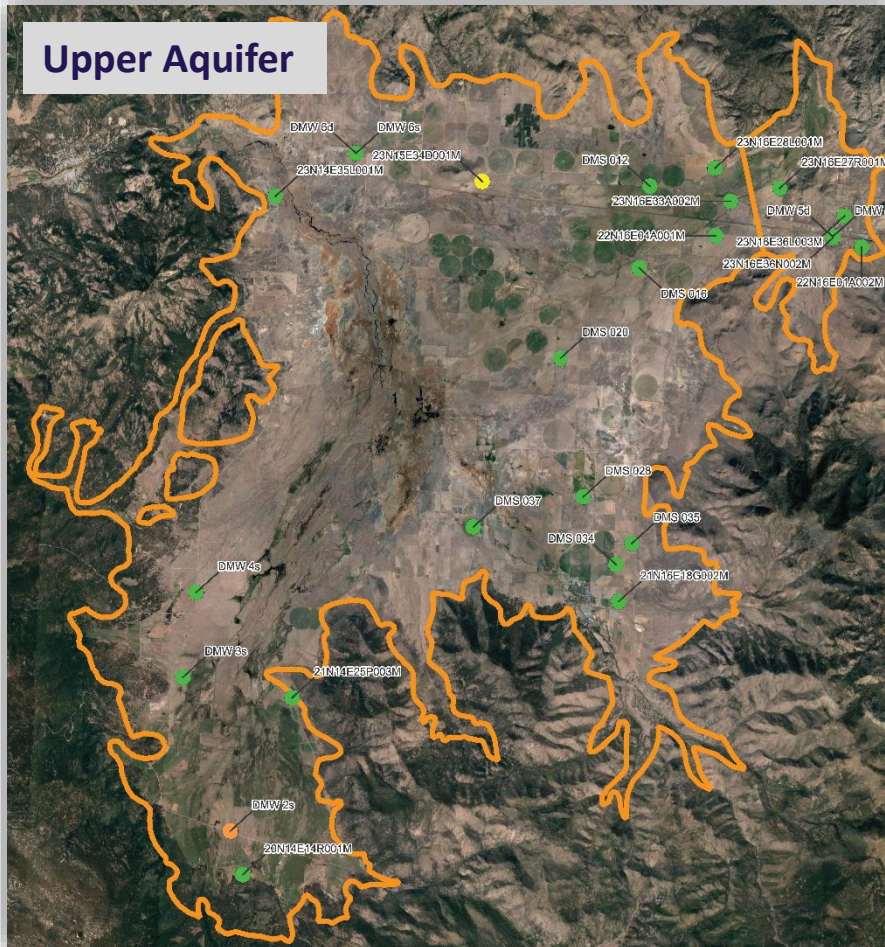
Fall Water Level Contours



WY 2022 Change in Water Levels

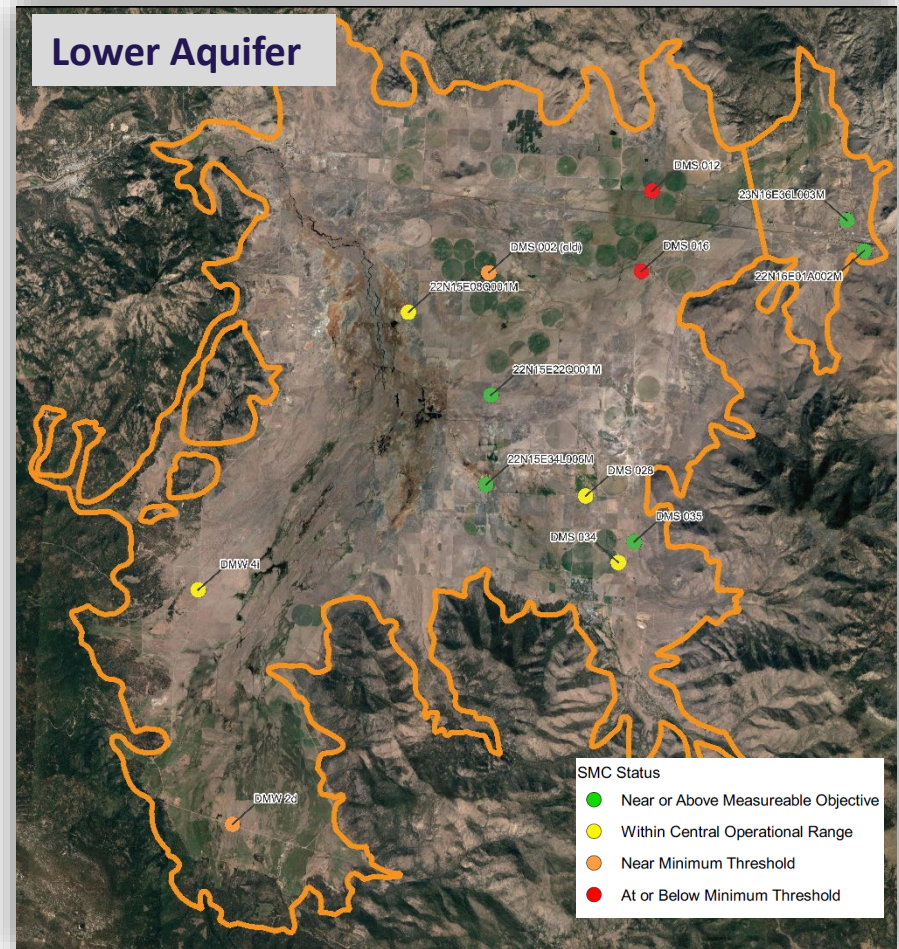
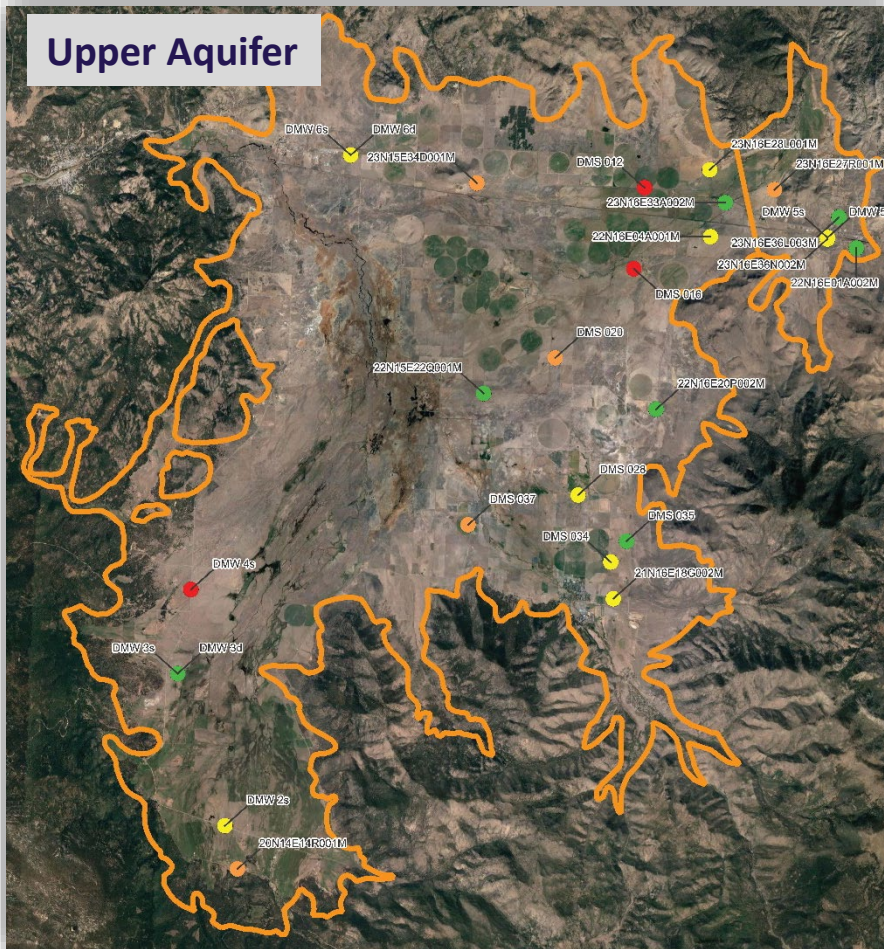


Spring SMC Status



- SMC Status
- Near or Above Measureable Objective
 - Within Central Operational Range
 - Near Minimum Threshold
 - At or Below Minimum Threshold

Fall SMC Status



SMC Status

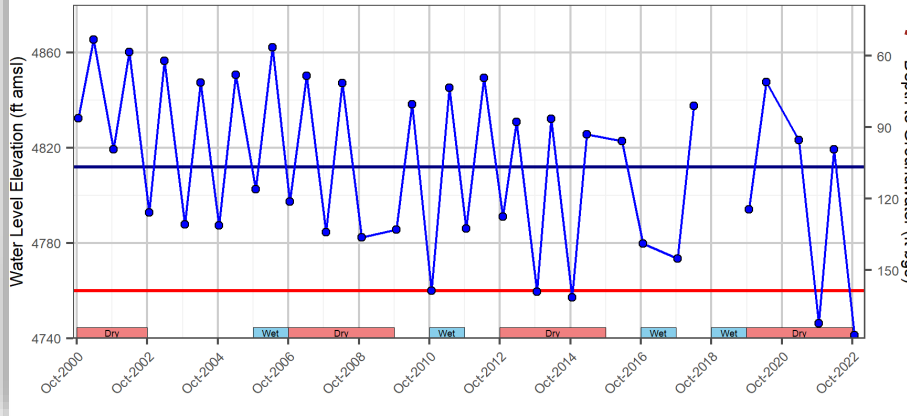
- Near or Above Measureable Objective
- Within Central Operational Range
- Near Minimum Threshold
- At or Below Minimum Threshold



Sierra Valley
Groundwater
Management District

Hydrographs-Westside

DMS 012



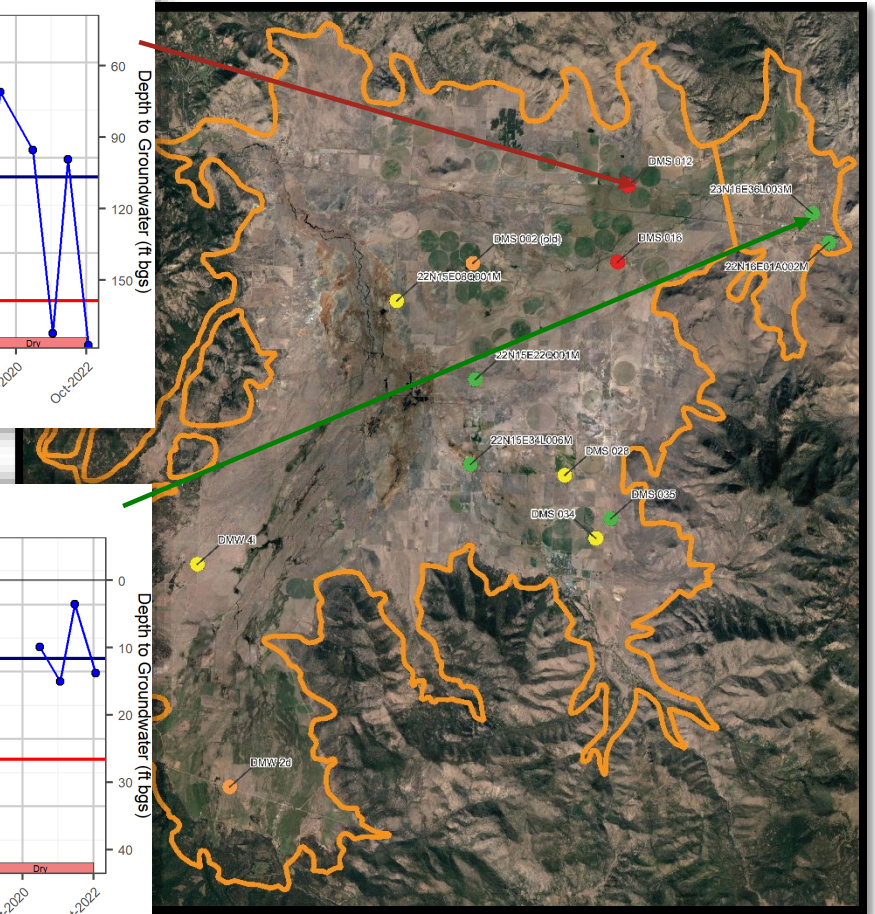
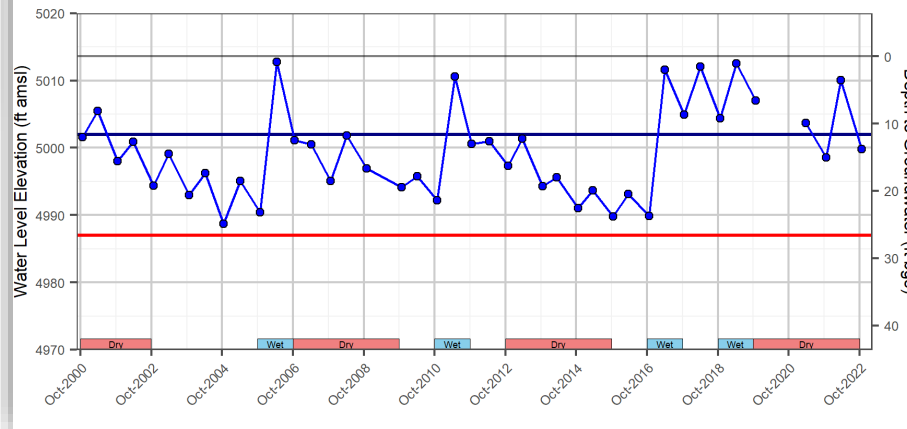
SMCs

- Measurable Objective
- Minimum Threshold

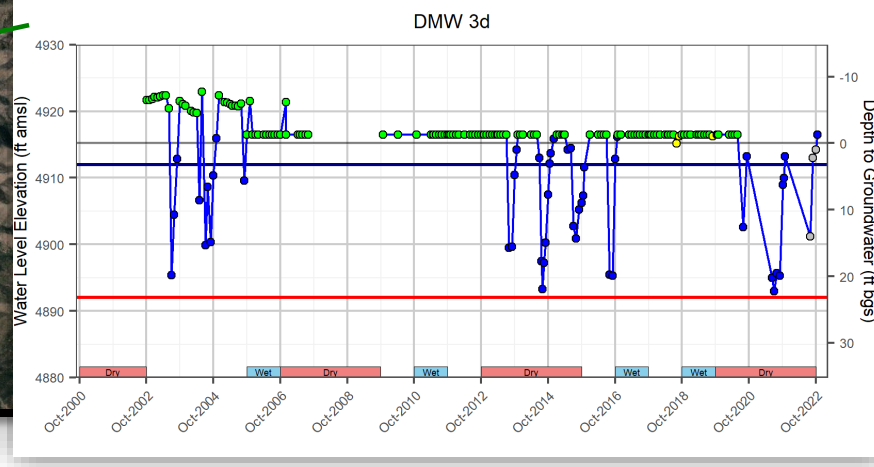
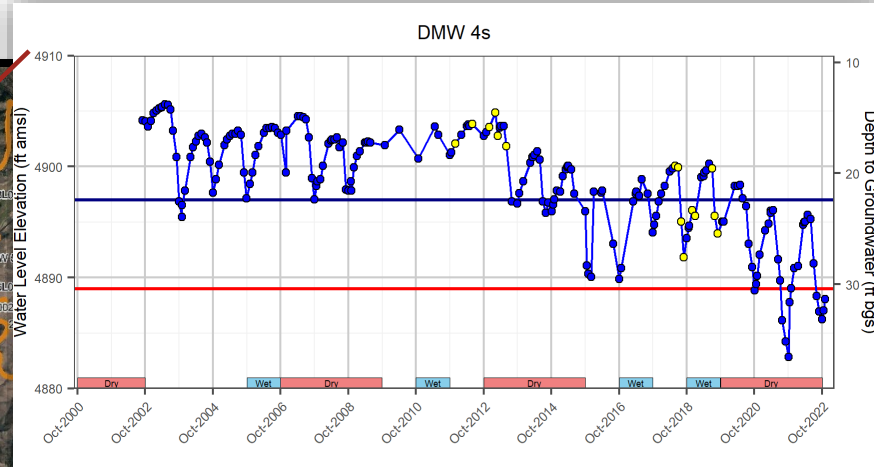
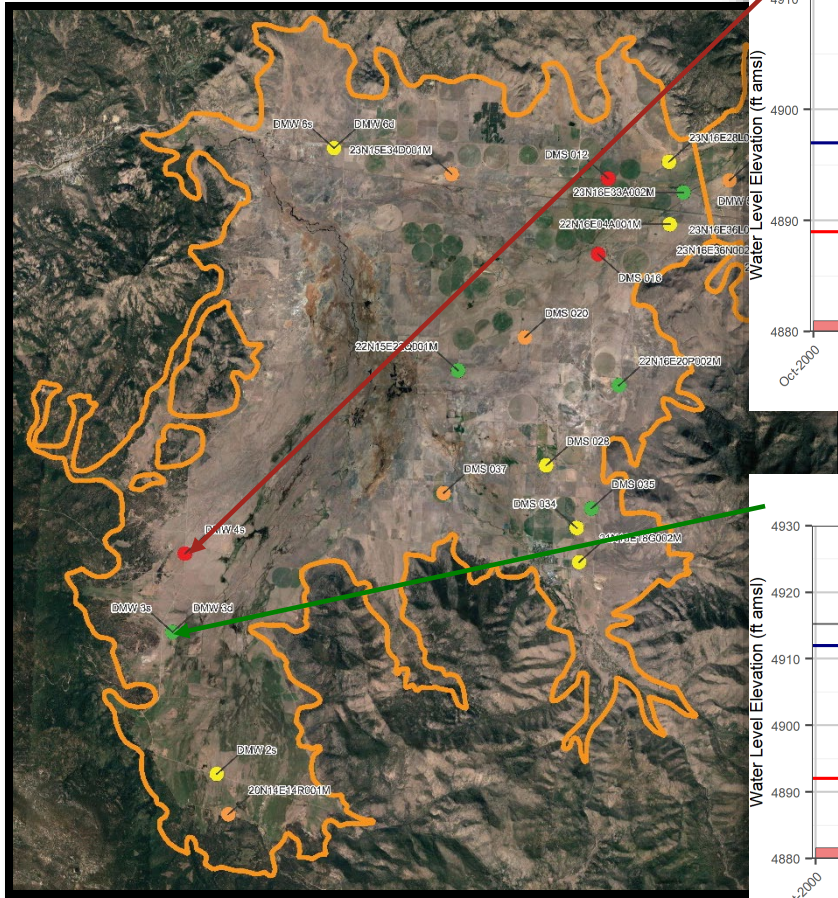
Water Level Observation

- Trusted
- Questionable

23N16E36L003M



Hydrographs-Eastside



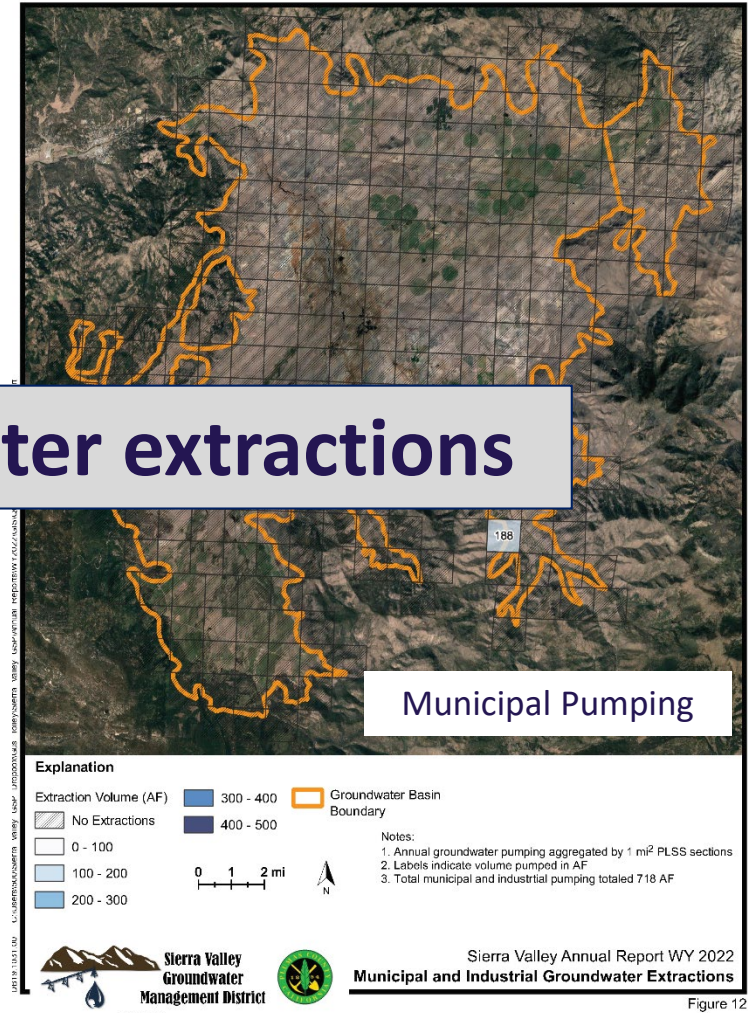
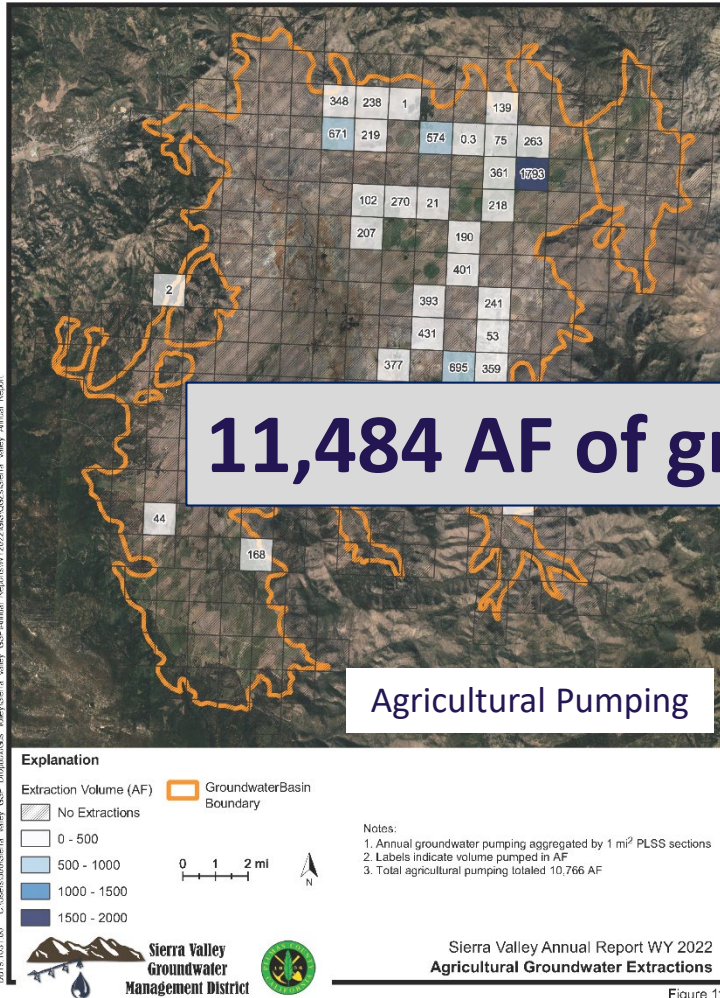
SMCs

- Measurable Objective
- Minimum Threshold

Water Level Observation

- Trusted
- Questionable
- Pending Evaluation
- Artesian

Groundwater Pumping



Pending Completion

- Update Sierra Valley Hydrogeologic System Model (SVHSM) through WY 2022.
- Use model to estimate surface water inflows/use and change in groundwater storage.