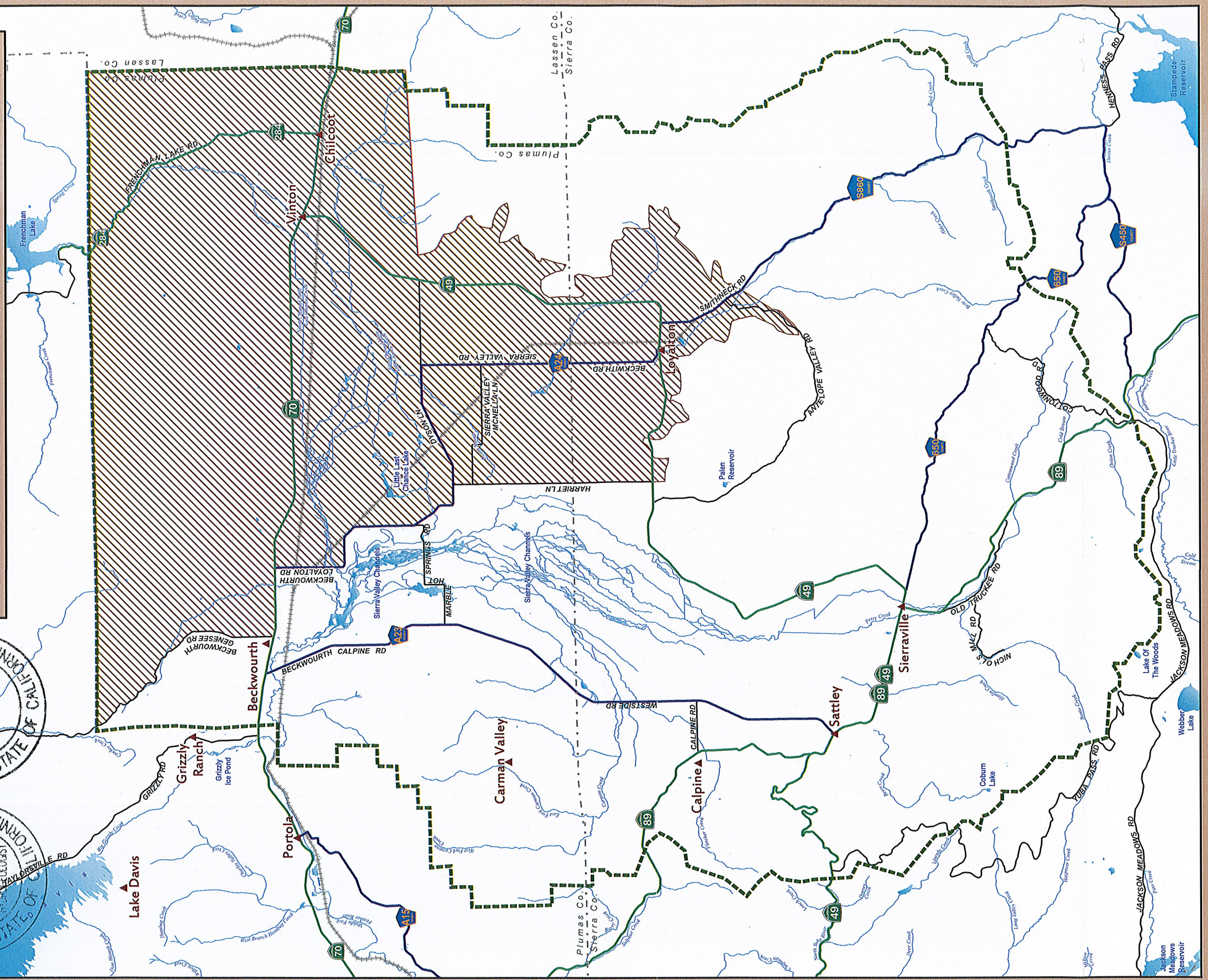


SIERRA VALLEY HIGH-CAPACITY WELL RESTRICTION AREA

REGISTERED GEOLOGIST • STATE OF CALIFORNIA
 KEVIN D. SCHMIDT
 NO. 176
 BECKWORTH, CALIFORNIA

REGISTERED GEOLOGIST • STATE OF CALIFORNIA
 KENNETH G. SCHMIDT
 NO. 1578
 BECKWORTH, CALIFORNIA



Legend

- Community
- Railroad
- State Highway
- County Route
- Road
- Sierra Valley Groundwater Management District
- High-capacity Well Restriction Area
- County Boundary



PLUMAS COUNTY GIS
 555 Main Street / Quincy, CA 95971
 (530) 283-7011
www.plumascounty.us
 Plot Date: 2/8/2021

Map produced by Plumas County GIS Division
 Mapper: Becky Osborn/Edil Date: 1/19/2017; 2/8/2017, 6/8/17
 Revision Date: 2/8/2021
 Map File Name: Sierra_Valley_High-Capacity_Well_2-8-21.mxd
 Data Sources: Plumas County Framework Data; ESRI World Relief
 Projection: California State Plane, Zone 1, NAD 1983



Disclaimer

Although a great deal of effort was made by Plumas County GIS to gather the mapping elements presented in this document, it does not constitute a complete and accurate representation of actual physical elements on the ground. Reasonable efforts have been made by Plumas County GIS to verify that this map accurately interprets the source data used in its preparation; however, a degree of error is inherent in all maps, and this map may contain omissions and errors in scale, resolution, rectification, positional accuracy, development methodology, interpretation of source data, and other circumstances. As additional data becomes available to Plumas County GIS, and as verification of source data continues, this map may be reinterpreted or updated by Plumas County GIS. This map is date specific and is intended for use only at the published scale. This digitally compiled map does not represent a legal survey or the land nor should it be used for navigational, engineering, or any other site-specific use and has been created for graphical purposes only. This map is distributed "as-is" without warranty of any kind.